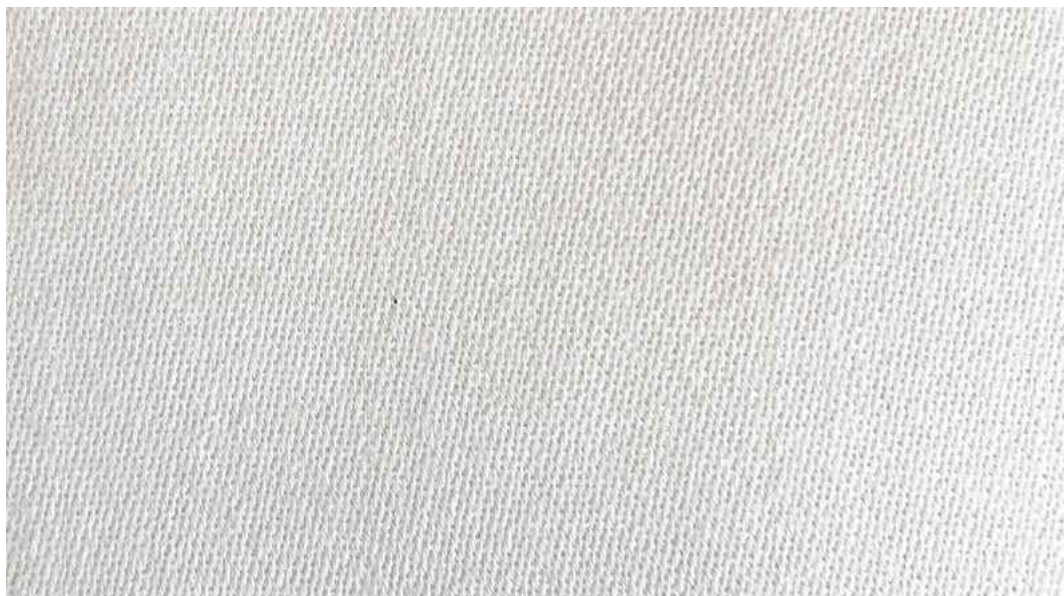


FOX LINTON



FABRIC

AVEBURY

Colour Shown: Water Lily (12 colours available) FL010065001

Avebury is a lightweight fabric woven with lambswool yarn on the face and viscose yarn on the reverse in a satin weave. The combination of the matt wool yarn with the soft sheen of the viscose adding to the delicate lustre of this fabric. The quality is light and soft to the handle and is available in a pretty range of 12 pale shades. Each colourway is a delicate tone on the face with a lighter tone on the reverse achieved through the dyeing process. The quality has been carefully finished in water without the use of harsh chemicals and makes for a very beautiful drape weight.

DESIGN CONTENT

60% Wool, 40% Viscose

DESIGN WIDTH

140cm

TYPE OF REPEAT

N/A

DESIGN CARE



USAGE

Curtains

SOLD BY

Metre
